



POWERED RESEARCH

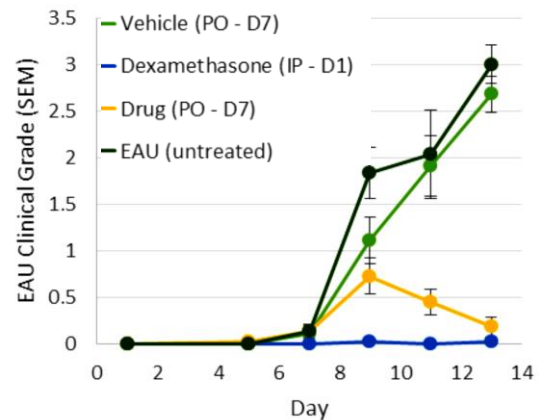
Uveitis Models in Rabbit and Rodent

Our team of experts developed multiple well-characterized animal models of uveitis used to assess the efficacy of anti-inflammatory therapeutics.

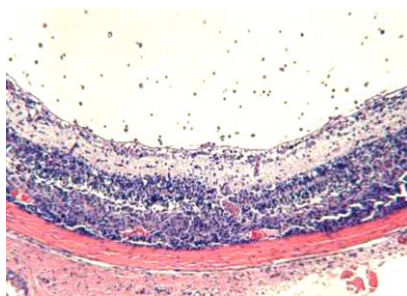
Uveitis Models:

- ✓ Experimental auto-immune (rodent)
- ✓ Endotoxin-induced (rat, rabbit)
- ✓ TNF-induced (rat)
- ✓ *Mycobacterium tuberculosis*-induced (rabbit)
- ✓ Anterior chamber inflammation: paracentesis, corneal incision, corneal abrasion (rabbit)

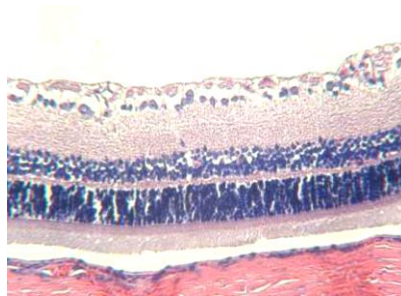
Mean Cumulative Irritation Scores



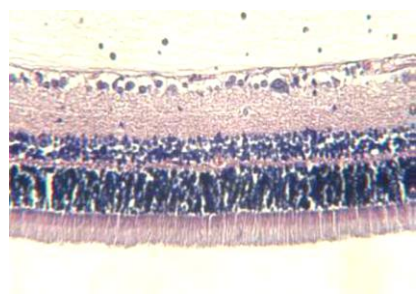
Ocular Histopathology in the EAU Model



EAU Vehicle



EAU Dexamethasone



EAU Drug

Endpoints can include (not limited to): slit lamp biomicroscopy and indirect ophthalmoscopy, high resolution fundus imaging, tonometry, pachymetry, pupilometry, fluorescein angiography, optical coherence tomography, electroretinography, flat mounts, histopathology, immunohistochemistry, and cytokine analysis.

And many other offerings tailored to your needs...

Our Team

Studies are led by our specialized team with decades of experience-

Dr. David Culp, Senior Vice President, and Dr. Brian Gilger, Board-Certified Veterinary Ophthalmologist

Contact Us

Email: info@poweredresearch.com | Web: www.poweredresearch.com

