



POWERED RESEARCH

Cell Therapy in Rodents, Rabbits, and Swine

We offer services for evaluating novel cell therapy approaches in ophthalmology and beyond. Our veterinarians and scientists are experts in precision delivery of cell-based materials and deep characterization of viability and efficacy in your experimental model.

Cell Therapy Delivery:

✓ Injection sites:

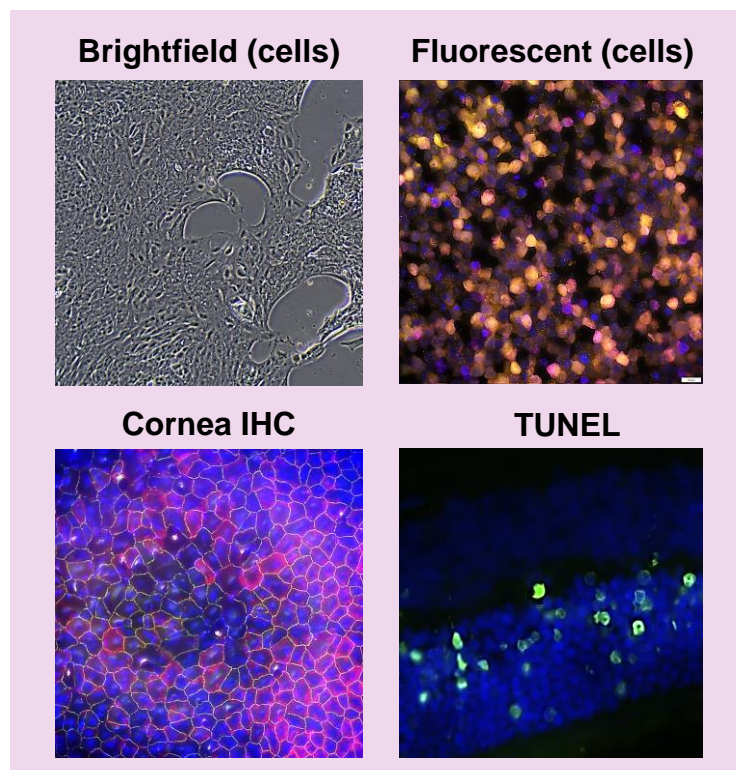
- Subretinal
- Intravitreal
- Intracameral

Our Capabilities:

- ✓ 400sqft cell culture and flow cytometry room
- ✓ Trained scientists to handle cell culturing and prep prior to dosing
- ✓ Exposure to a variety of formulations including hydrogels and ECM grafts
- ✓ Brightfield and Fluorescent Imaging

Common Readouts:

- ✓ Pre- and Post-Dose Cell Counts
- ✓ Optical Coherence Tomography
- ✓ TUNEL assay (cell viability)
- ✓ Immunohistochemistry



Endpoints can include: slit lamp biomicroscopy and indirect ophthalmoscopy, high resolution fundus imaging, tonometry, pachymetry, pupilometry, fluorescein angiography, optical coherence tomography, electroretinography, flat mounts, immunofluorescence, TUNEL assay, in situ hybridization and histopathology.

And many other offerings tailored to your needs...

Our Team

Studies are led by our specialized team with decades of experience-

Dr. David Culp, Senior Vice President, and Dr. Brian Gilger, Board-Certified Veterinary Ophthalmologist

Contact Us

Email: info@poweredresearch.com | Web: www.poweredresearch.com

